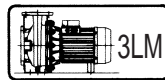


3L Series - wetted parts in AISI 316

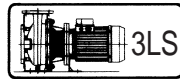


3LS



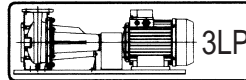
3LM

monobloc with extended motor shaft



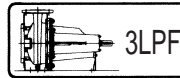
3LS

monobloc with standard motor and rigid coupling



3LP

pump on baseplate with standard motor and coupling



3LPF

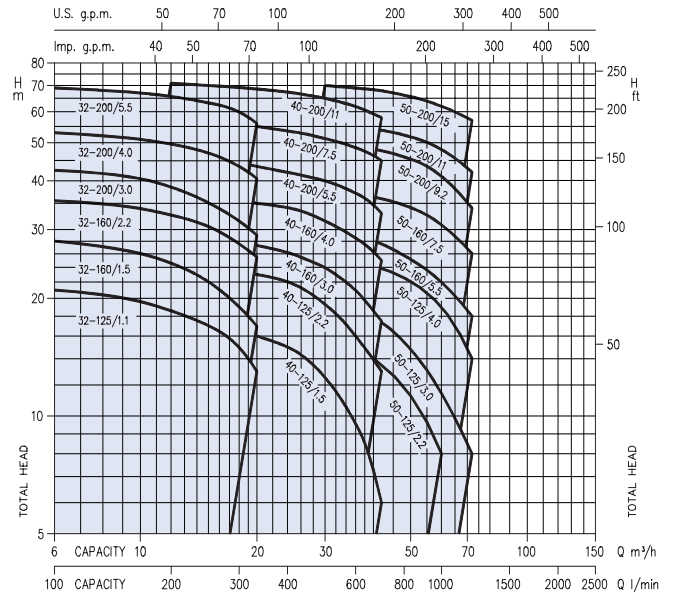
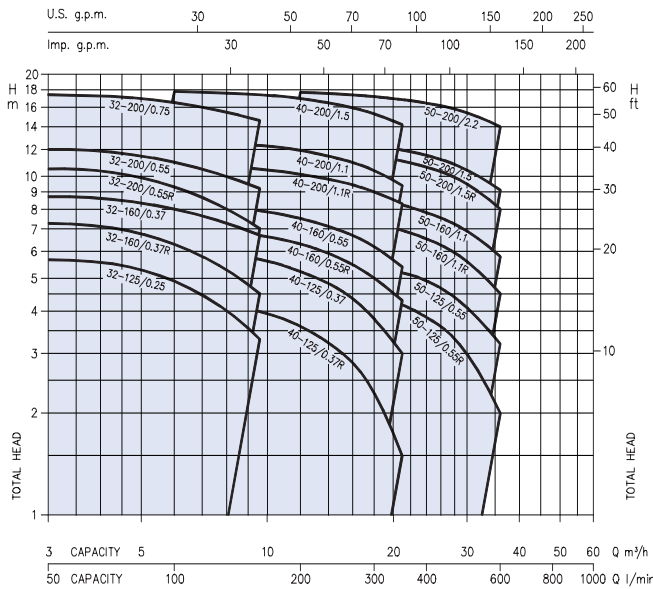


3LSF

bareshaft pump

1450 min⁻¹

2900 min⁻¹



PERFORMANCE TABLE

1450 min⁻¹

Pump type 3LM4	kW	Absorbed Current (A)		l/min m ³ /h	Q=Capacity												
		Three-phase 230V	400V		50	100	160	250	300	350	400	500	600				
					H=Total head												
					3	6	9,6	12	15	18	21	24	30	36			
32-125/0.25	0.25	1.4	0.8		5.6	4.9	3.3	-	-	-	-	-	-	-	-	-	-
32-160/0.37R	0.37	1.4	0.8		7.2	6.3	4.5	-	-	-	-	-	-	-	-	-	-
32-160/0.37	0.37	1.6	0.9		8.7	8	6.7	-	-	-	-	-	-	-	-	-	-
32-200/0.55R	0.55	1.9	1.1		10.5	9.3	7	-	-	-	-	-	-	-	-	-	-
32-200/0.55	0.55	2.1	1.2		12	11	9.2	-	-	-	-	-	-	-	-	-	-
32-200/0.37R	0.37	3.1	1.8		17.3	16.5	14.6	-	-	-	-	-	-	-	-	-	-
40-125/0.37R	0.37	1.5	0.9		-	4.5	4	3.6	3	2.3	1.5	-	-	-	-	-	-
40-160/0.55R	0.55	1.9	1.1		-	6.2	5.7	5.2	4.6	3.8	3	-	-	-	-	-	-
40-160/0.55	0.55	2.1	1.2		-	7.2	6.7	6.3	5.7	5	4.3	-	-	-	-	-	-
40-160/1.1R	1.1	3.5	2.0		-	8.5	7.9	7.5	6.9	6.2	5.4	-	-	-	-	-	-
40-200/1.1R	1.1	3.8	2.2		-	11	10.5	10.1	9.6	9	8.3	-	-	-	-	-	-
40-200/1.1	1.1	3.8	2.2		-	12.7	12.3	11.9	11.2	10.4	9.4	-	-	-	-	-	-
40-200/1.5	1.5	6.4	3.7		-	17.8	17.4	16.9	16.2	15.3	14.2	-	-	-	-	-	-
50-125/0.55R	0.55	1.7	1.0		-	-	-	4.9	4.7	4.4	4.2	3.8	3	2	-	-	-
50-160/1.1R	1.1	3.5	2.0		-	-	-	5.8	5.6	5.4	5.2	4.9	4.1	3.2	-	-	-
50-160/1.1	1.1	3.8	2.2		-	-	-	7.7	7.5	7.2	6.9	6.5	5.6	4.5	-	-	-
50-200/1.5R	1.5	5.2	3.0		-	-	-	9	8.8	8.5	8.2	7.8	6.9	5.8	-	-	-
50-200/1.5	1.5	5.5	3.2		-	-	-	12.1	11.8	11.5	11.1	10.6	9.5	8	-	-	-
50-200/2.2	2.2	8.7	5.0		-	-	-	13	12.7	12.3	11.9	11.5	10.5	9.1	-	-	-
					-	-	-	17.7	17.5	17.2	16.8	16.4	15.4	14	-	-	-

2900 min⁻¹

Pump type 3LM	kW	Absorbed Current (A)			l/min m ³ /h	Q=Capacity															
		230V	400V	690V		100	150	200	250	300	333	400	450	500	550	600	650	700	800	1000	1200
						H=Total head															
					6	9	12	15	18	20	24	27	30	33	36	39	42	48	60	72	
32-125/1.1	1.1	5.0	2.9	-	21	20	18.5	17	15	13	-	-	-	-	-	-	-	-	-	-	
32-160/1.5	1.5	5.9	3.4	-	28	26.5	24.5	22	19	17	-	-	-	-	-	-	-	-	-	-	
32-160/2.2	2.2	8.3	4.8	-	35.5	34.5	32.5	30.5	27.5	25.5	-	-	-	-	-	-	-	-	-	-	
32-200/3.0	3.0	11.8	6.8	-	42.5	41	38.5	35	31.5	29	-	-	-	-	-	-	-	-	-	-	
32-200/4.0	4.0	15.6	9.0	-	53	51.5	49.5	47	43.5	40.5	-	-	-	-	-	-	-	-	-	-	
32-200/5.5	5.5	-	11.8	6.8	69	67.6	65.6	63	60	56	-	-	-	-	-	-	-	-	-	-	
40-125/1.5	1.5	5.9	3.4	-	-	-	18	17.5	17	16	15	14	12.5	11	9.5	8	6	-	-	-	
40-125/2.2	2.2	8.3	4.8	-	-	-	26	25	24.2	23	22	21	19	17.5	16	14.3	13	-	-	-	
40-160/3.0	3.0	11.8	6.8	-	-	-	30	29	28.5	27.3	26.2	25.4	24	22.5	21	19.2	17.5	-	-	-	
40-160/4.0	4.0	15.9	9.2	-	-	-	38	37	36	35	34	33	31.3	30	28.5	27	25	-	-	-	
40-200/5.5	5.5	-	11.1	6.4	-	-	46	45	44	43.5	42	41	40	38.5	37	35.1	33	-	-	-	
40-200/7.5	7.5	-	15.1	8.7	-	-	56.5	56	55.3	55	53.5	52.5	51.2	49.8	48.5	47	45	-	-	-	
40-200/11	11	-	20.0	11.6	-	-	71	70	69.3	68.8	67.5	66.2	65	63.5	62	60	58	-	-	-	
50-125/2.2	2.2	8.3	4.8	-	-	-	-	-	-	-	17	16.6	16.1	15.5	14.9	14.2	13.4	11.8	8	-	
50-125/3.0	3.0	11.8	6.8	-	-	-	-	-	-	-	20.5	20	19.5	19	18.5	18	17.3	15.5	12.3	8	
50-125/4.0	4.0	15.9	9.2	-	-	-	-	-	-	-	26	25.9	25.7	25.3	24.7	24.2	23.3	22.2	19	14	
50-160/5.5	5.5	-	11.5	6.6	-	-	-	-	-	-	31	30.5	30	29.5	29	28	27.6	26	22.5	18	
50-160/7.5	7.5	-	15.5	9.0	-	-	-	-	-	-	39	38.5	38	37.5	37	36.5	36	34.5	31	26	
50-200/9.2	9.2	-	17.4	10.0	-	-	-	-	-	-	50	49.5	49	48.5	48.4	47.5	46	41	34	28	
50-200/11	11	-	22.0	12.7	-	-	-	-	-	-	56	55.5	55	54.5	53.8	52	48	42	34	28	
50-200/15	15	-	31.3	18.0	-	-	-	-	-	-	70	69.5	69	68.5	68	66	62	57	48	34	