

3A SANITARY SERIES PRECISION TURBINE FLOWMETERS



- Beverage / Food / Pharmaceutical Grade Applications
- High Accuracy
- Built to Wisconsin Dairy Standards
- Horizontal or Vertical Mounting
- Clean in place with low pressure steam
- Manufactured in the USA



The Sponsler 3A Sanitary Precision Turbine Flowmeters

are constructed of 300 Series Stainless Steel material and electro-polished to eliminate any cracks or crevices. The Sponsler 3A Sanitary series Precision Flowmeter range in size from 3/4" to 4" and can be installed either horizontally or vertically with a variety of optional endfittings to meet your needs. With a +/- 0.5% standard linearity and a repeatability of

+/- 0.1% over a nominal flow range, the Sponsler 3A Sanitary series Precision Flowmeter is built for dairy applications to the standards of the Wisconsin Dairy Association with food grade, crevice-free PTFE or Carbide sleeve bearings. Our 3A Sanitary series Precision Flowmeter can handle flow rates of 1.5 to 1250 GPM in twelve overlapping ranges, temperature ranges from -100° F to + 450° F (-100° F to 750° F with hi-temp coil), and can be cleaned without removal

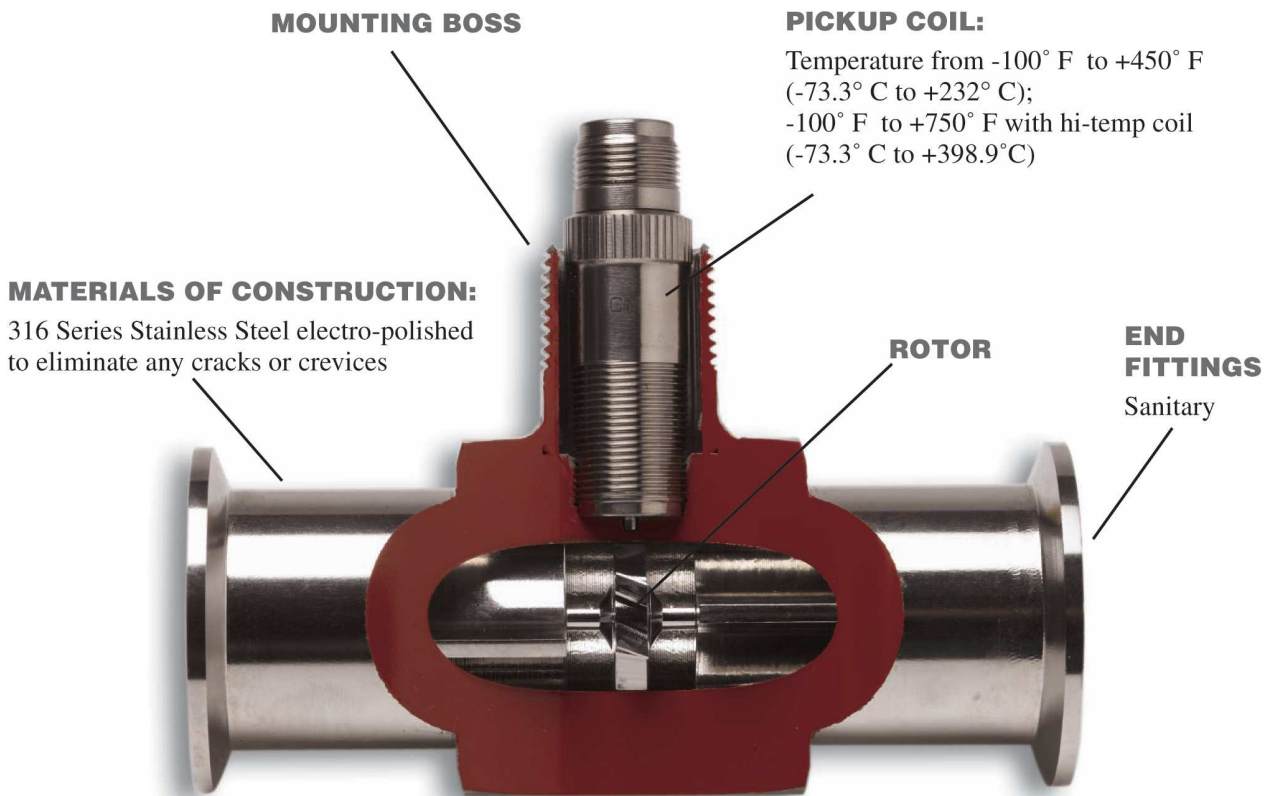
using low-pressure steam. We are so proud of the construction and manufacturing of our 3A Sanitary Precision Turbine Flowmeter, we put our 3A certification on the meter as a reminder of the high standard of quality our meters must surpass everyday. We know you would only trust your beverage, food, and pharmaceutical grade applications to a flowmeter that said 3A because you know the importance of accurate, reliable sanitary measurement.

FLOW RANGE

Nominal Meter Size	FLOW RANGE				METER FACTOR “K” PULSES	STANDARD ENDFITTING	OPTIONAL ENDFITTING
	GPM / LPM						
	MIN REPEAT	NOMINAL MIN LINEAR	NOMINAL MAX LINEAR	EXTENDED MAX	US Gallons		
3/4"	1.5 / 5.68	2.5 / 9.46	29 / 109.78	30 / 113.56	1035	1 1/2"	2"
1"	2 / 7.57	4 / 15.14	60 / 227.12	75 / 283.91	500	1 1/2"	2"
1 1/4"	3 / 11.36	6 / 22.71	93 / 352.04	115 / 435.32	322	1 1/2"	2"
1 1/2"	5 / 18.93	8 / 30.28	130 / 492.10	175 / 662.45	230	1 1/2"	2"
2"	11 / 41.64	15 / 56.78	225 / 851.72	275 / 1040.99	133	2"	2 1/2"
2 1/2"	15 / 56.78	25 / 94.64	400 / 1514.17	500 / 1892.71	75	2 1/2"	3"
3"	30 / 114	40 / 151	650 / 2461	800 / 3028	46.1	3"	NONE
4"	50 / 189	75 / 284	1250 / 4732	1500 / 5678	20.7	4"	NONE

NOTE: Consult factory for non-3A Sanitary flowmeters below 3/4".

SPONSLER 3A SANITARY SERIES FLOWMETERS



SPECIFICATIONS

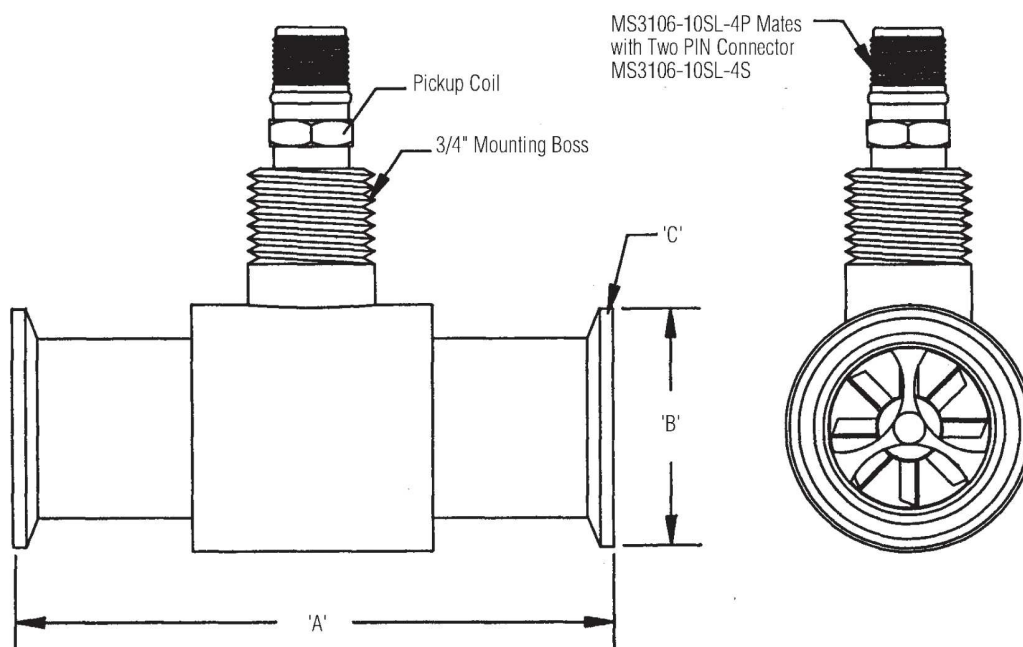
- **Linearity:** +/- 0.5% standard
+/- 0.25% optional
- **Repeatability:** +/- 0.1% or
better over nominal rated
flow range
- **Temperature:** -100°F to
+450°F; -100°F to 750°F
with high temp coil
- **Materials:** Standard
Precision Sanitary
Flowmeters are constructed
of 300 Series stainless steel.
(Other materials are available
to satisfy most applications,
consult factory)
- **Electrical Output:**
A minimum of 30 mV pp
at the bottom of the nominal
flow range.
- **Pressure Drop:** 4 psi at max
nominal rated flow range.
- **Calibration:** Furnished with
standard 10 point water
calibration. (Special
calibrations available)
- **Flow Ranges:** From 1.5 to
1250 GPM.

FEATURES

- Special food grade PTFE or
Carbide sleeve bearings standard
- Clean in place with low pressure
steam
- Built to Wisconsin Dairy
Association Standards
- Can be installed vertically or
horizontally
- Optional Endfittings
- Sizes 3/4" to 4" inches –
custom and standard designs
- Manufactured in the USA

INSTALLATION DIMENSIONS

SIZE	Dimensions (Inches / cm)		End Connections
	A	B	C
3/4"	5 / 12.7	1.984 / 5.039	1 1/2"
1"	5 / 12.7	1.984 / 5.039	1 1/2"
1 1/4"	5 / 12.7	1.984 / 5.039	1 1/2"
1 1/2"	5 / 12.7	1.984 / 5.039	1 1/2"
2"	6 / 15.24	2.516 / 6.39	2"
2 1/2"	7.5 / 19.05	3.047 / 7.74	2 1/2"
3"	9.5 / 24.13	3.579 / 9.09	3"



MODEL SELECTION GUIDE

SP _____ - _____ - _____ - _____ - G - _____ - X - _____ Meter Size Bearing Rotor Endfitting Material Options (See Sizing Chart) *Omit if same as meter size X = Mounting Boss			
BEARING SELECTIONS	ROTOR SELECTIONS	MATERIAL	OPTIONS
CB = Cryogenic Ball MB = Metal Ball TS = PTFE Sleeve* GS = Graphitar Sleeve CS = Carbide Sleeve* PK = Peak Sleeve * 3A specific	PHL = 17-4 PH Liquid	4 = 304 S.S. 4L = 304L S.S. 6 = 316 S.S. 6L = 316L S.S.	FB = RF - 10 Coil HT = HI Temp Coil (SC28 - 14G) Line size and meter size should be the same. If not an adapter is required.

LT5006 06/04

