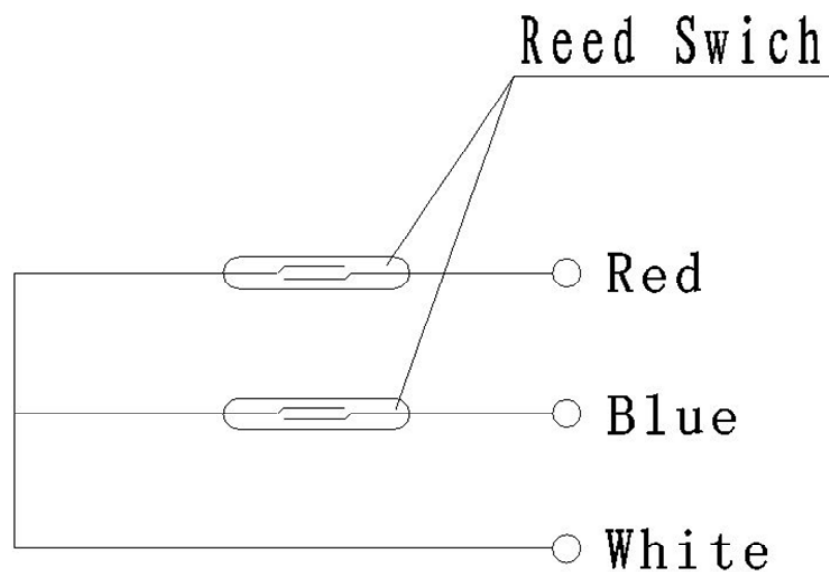

STAINLESS WATER METER

LXSGY-15E~50E

Multi-jet, vane wheel, dry-dial water meter with pulse



The operation description of the two reed switches system

Please see the diagram of the two reed switches system below, the two reed switches would be operated “ON” OR “OFF” respectively by the magnet fitted to the pointer or gear during its running on the register, but never “ON” at the same time, unless the out-magnet attacks. The two reed switches operate two “ON” and two “OFF” in one round of the pointer or the gear means one signal output, this principle prevents the loss or overcounting of the signal output due to the switches joggling or the pipe vibrating, so assures reliability of the signal output.

Application:

--Measuring the total volume of cold portable water passing through the pipeline.

Feature:

- Multi-jet, dry-dial, brass body, easy for maintenance;
- Magnetic drive reliable characteristic, long working life;
- Vacuum sealed register ensures the dial keep free from fog and frost, Keep the reading clear in a long term service;
- Technical data conform to international standard ISO4064 Class B
- Pulse with 1L/pulse、 10L/pulse、 100L/pulse、 1000L/pulse

Working condition:

Water temperature: 0.1℃~40℃ for cold water meter .
0.1℃~90℃ for hot water meter.

Water pressure : ≤1.0Mpa

Maximum permissible error:

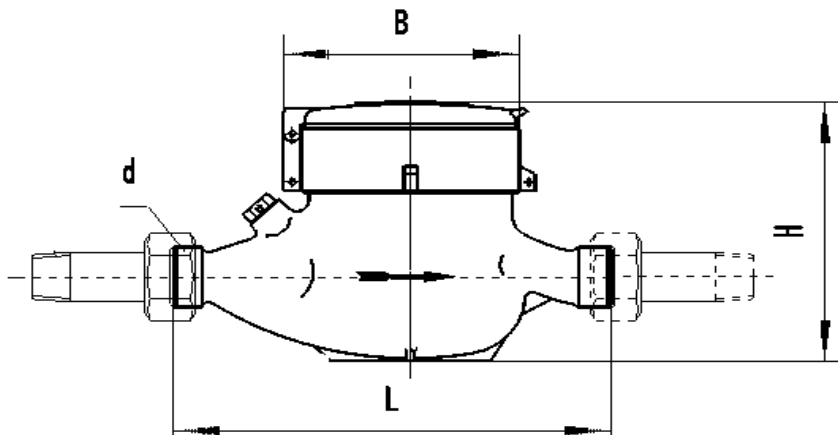
- (1) in the lower zone from q_{\min} inclusive up to but excluding q_t is $\pm 5\%$.
- (2) in the upper zone from q_t inclusive up to and including q_s is $\pm 2\%$;
Hot water meter $\pm 3\%$

MAIN TECHNICAL SPECIFICATIONS

Type	Size (mm)	Class	q_s	q_p	q_t	q_{\min}	Minimum Reading	Maximum Reading
			Overload Flow	Permanent Flow	Transitional Flow	Minimum Flow		
			m^3/h		L/h		m^3	
LXSGY-15E2	15	B	3	1.5	120	30	0.00005	99,999
LXSGY-20E2	20	B	5	2.5	200	50	0.00005	99,999
LXSGY-25E2	25	B	7	3.5	280.0	70	0.00005	99,999
LXSGY-32E2	32	B	12	6.0	480	120	0.00005	99,999
LXSGY-40E2	40	B	20	10	800	200	0.00005	99,999
LXSGY-50E2	50	B	30	15	3000	450	0.00005	99,999

DIMENSIONS

Type	Size	L Length	B Width	H Height	d Connecting Thread
	mm				
LXSGY-15E2	15	165	98	116	G3/4B
LXSGY-20E2	20	190	98	117	G1B
LXSGY-25E2	25	260	103.5	124	G1 ¹ / ₄ B
LXSGY-32E2	32	260	103.5	124	G1 ¹ / ₂ B
LXSGY-40E2	40	300	125	162	G2B
LXSGY-50E2	50	300	125	162	G2 ¹ / ₂ B
		280	160	187.5	Flange connect ISO 7005-2:1988 φ D=125



Flow Error Curve

